

Signature



YS-986204

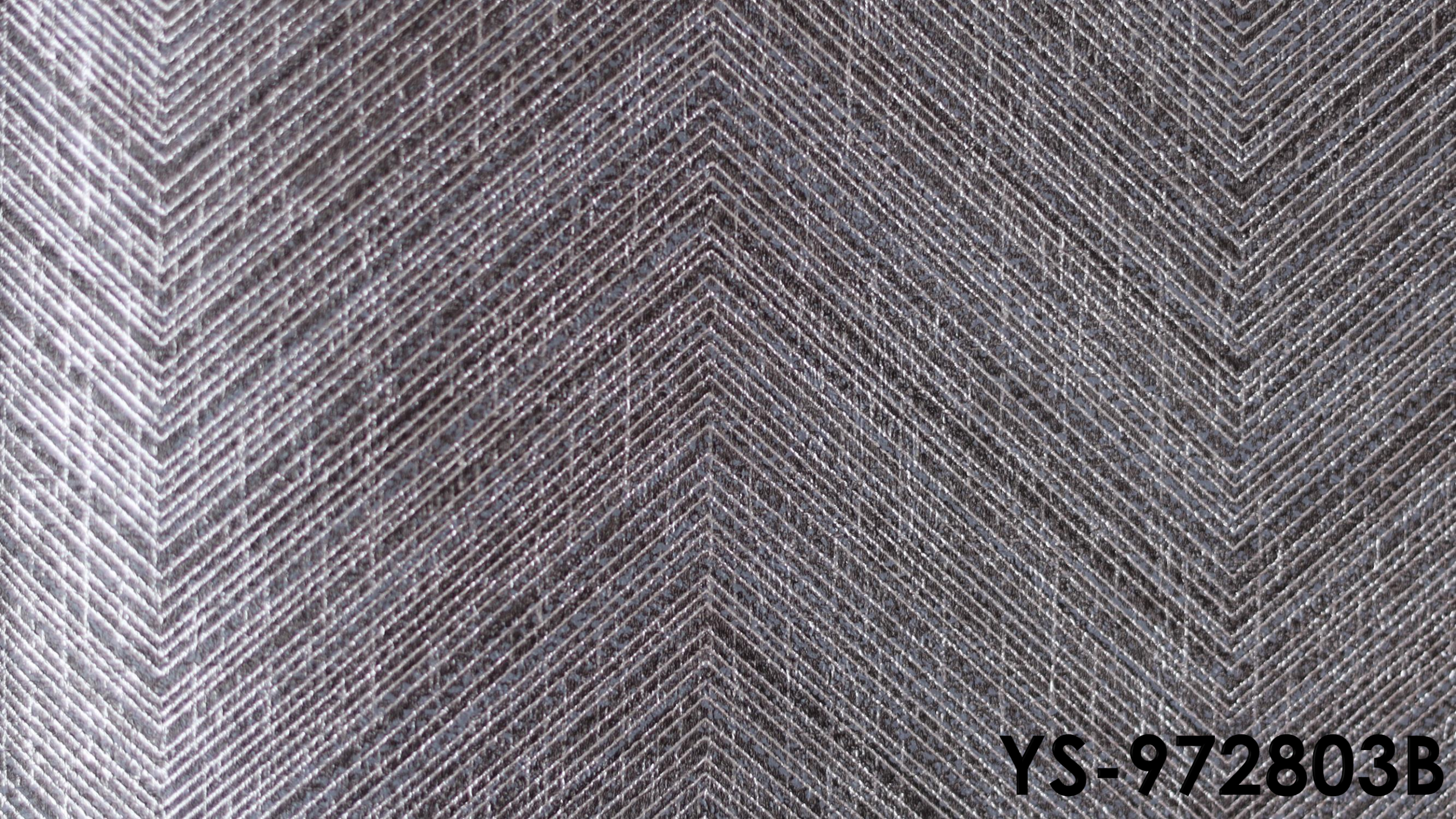


YS-722909

YS-972802

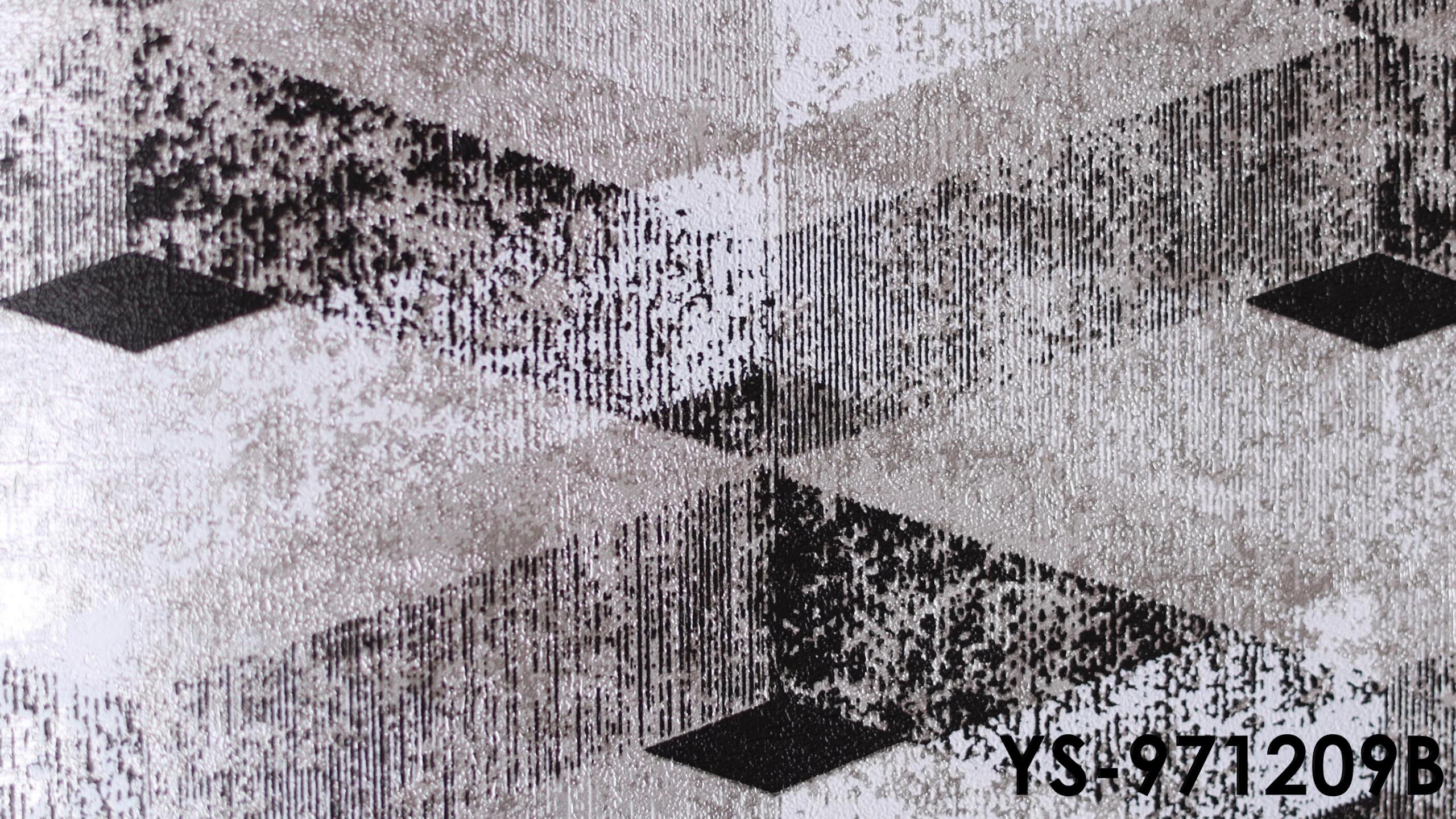


YS-986203



YS-972803B

YS-971211B

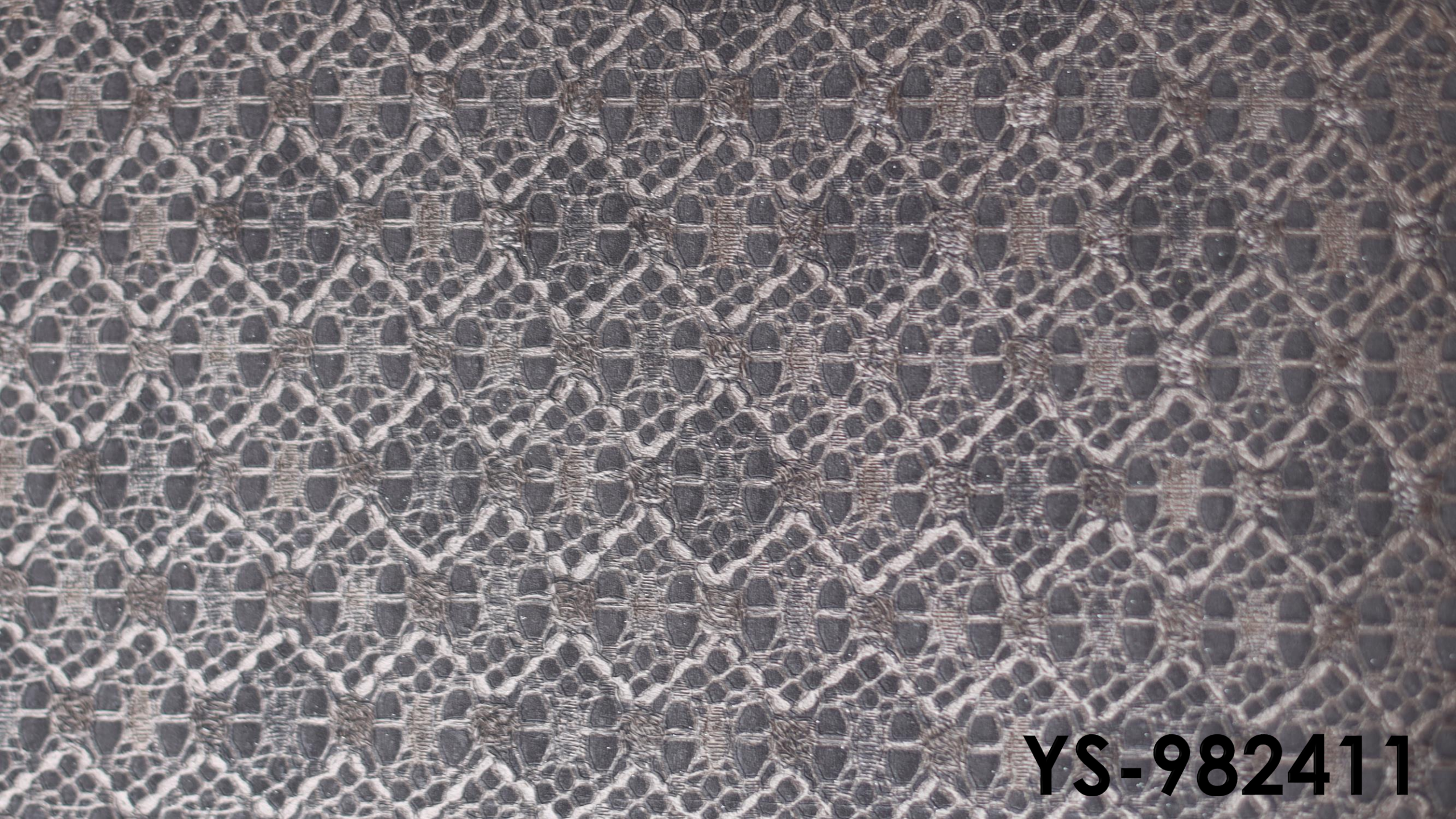


YS-971209B

YS-973001B

YS-973011B

YS-984906



YS-982411

YS-973010B

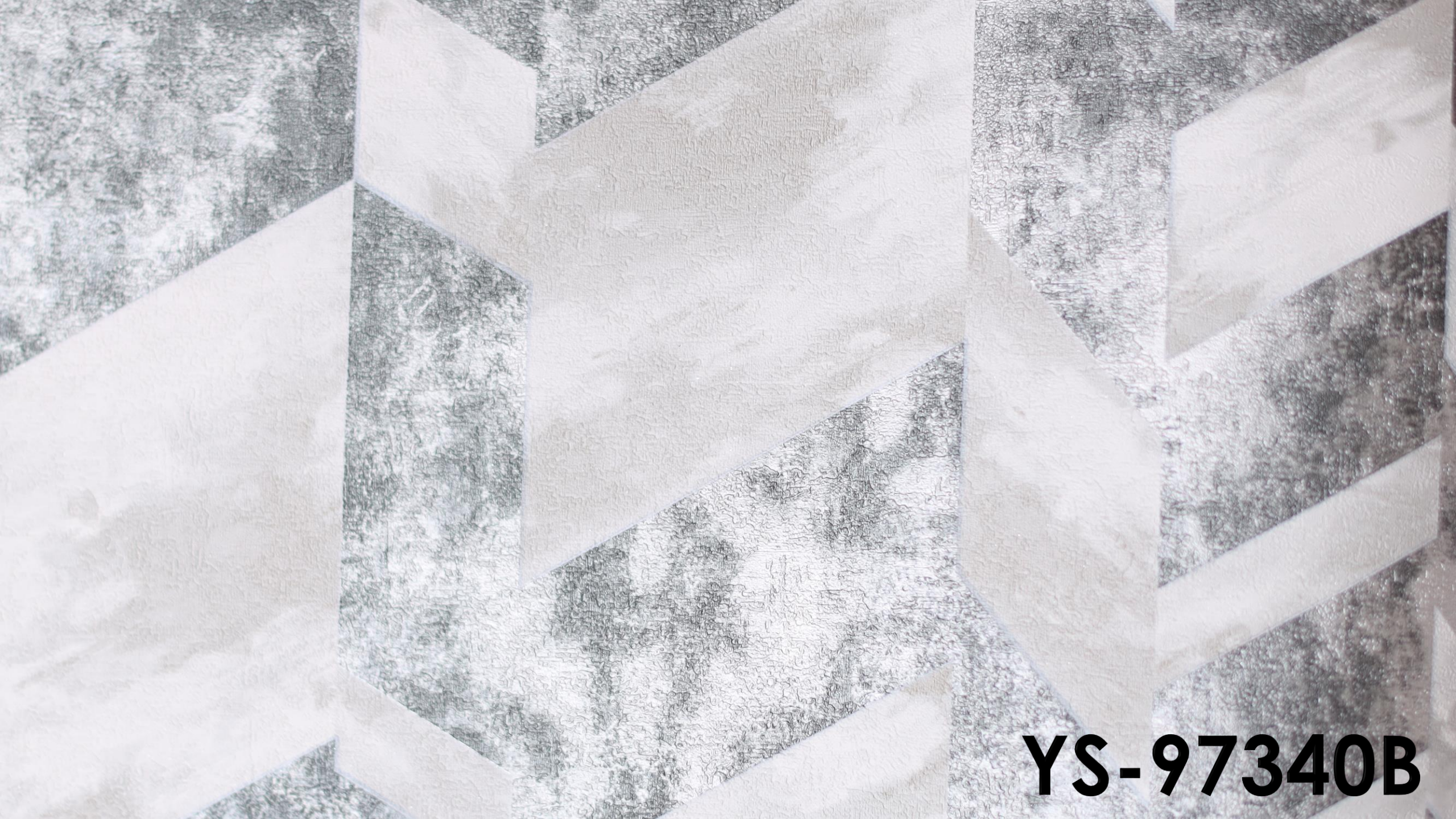


YS-971106B

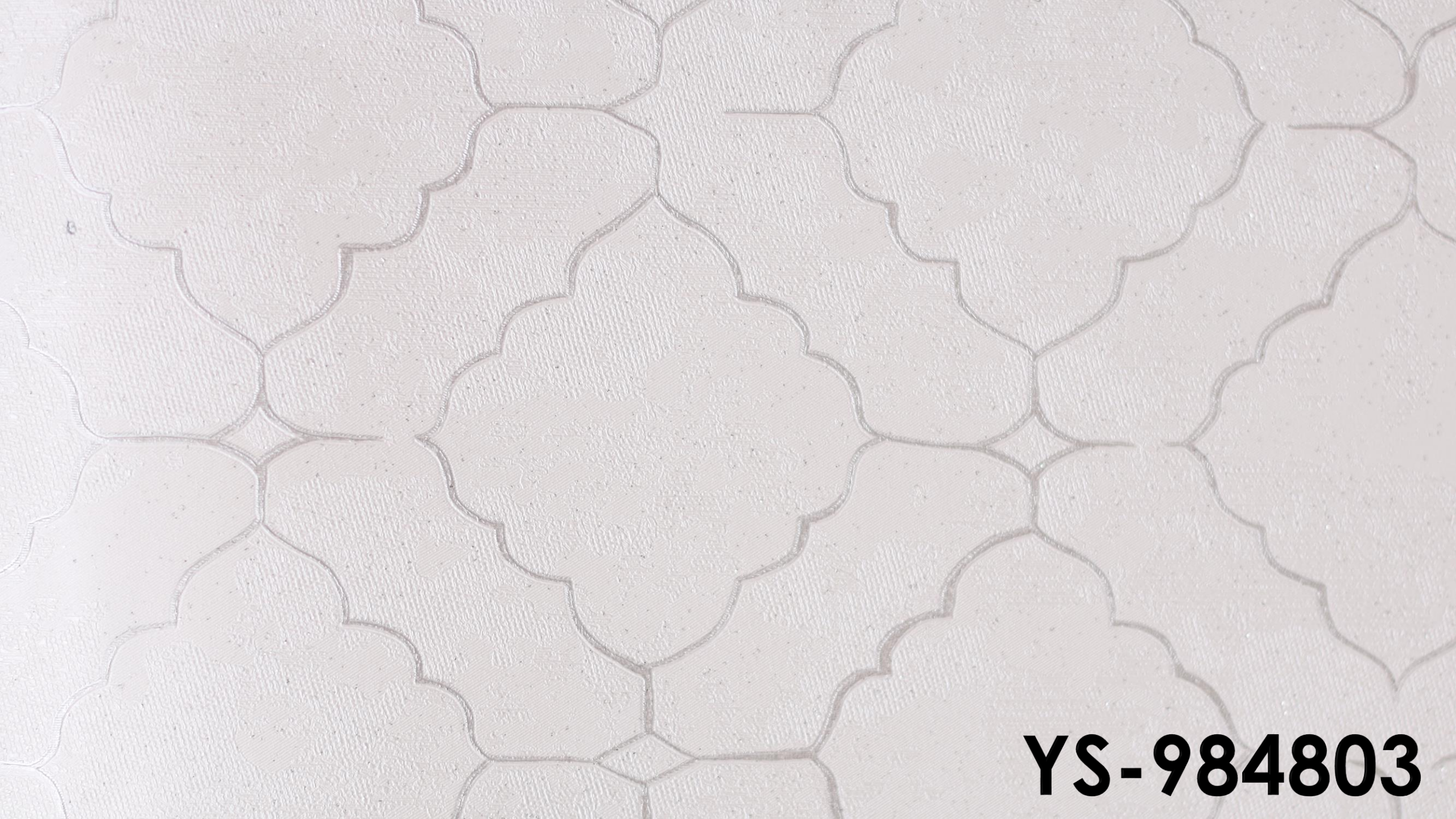


YS-984808

YS-986202



YS-97340B



YS-984803

YS-970803B

YS-970812B

YS-972805B

YS-971004B



YS-973401B



YS-971210B

YS-972706B



YS-972911B

YS-971010B



YS-982403

YS-971403B

YS-972709B



YS-972806B

YS-971402B

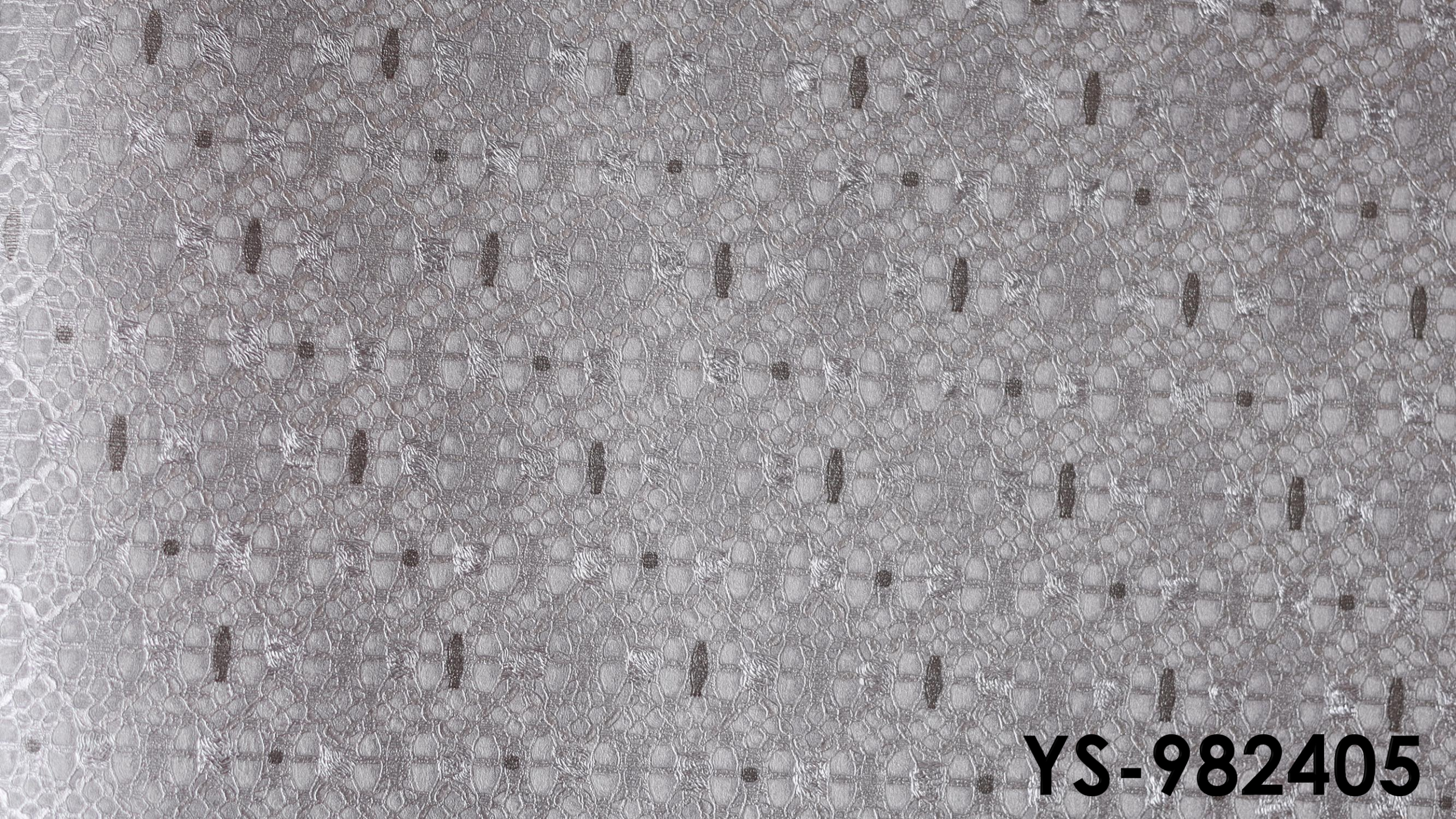


YS-971007B



YS-984805

YS-973007B



YS-982405

YS-984905



YS-984806



YS-985414

YS-985406

YS-985408

YS-985415

YS-971404B



YS-986205

YS-970807B



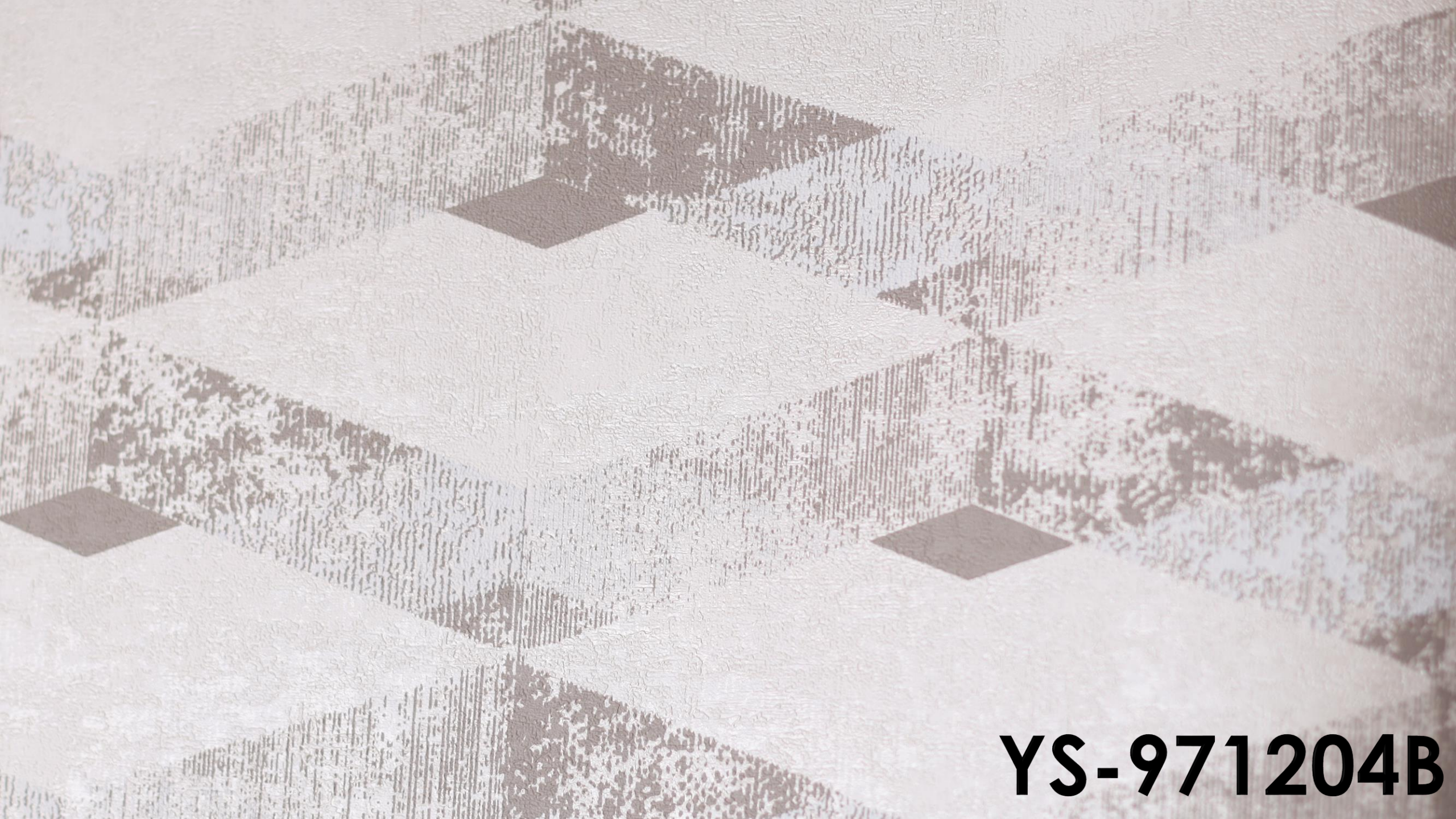
YS-972910B



YS-971408B



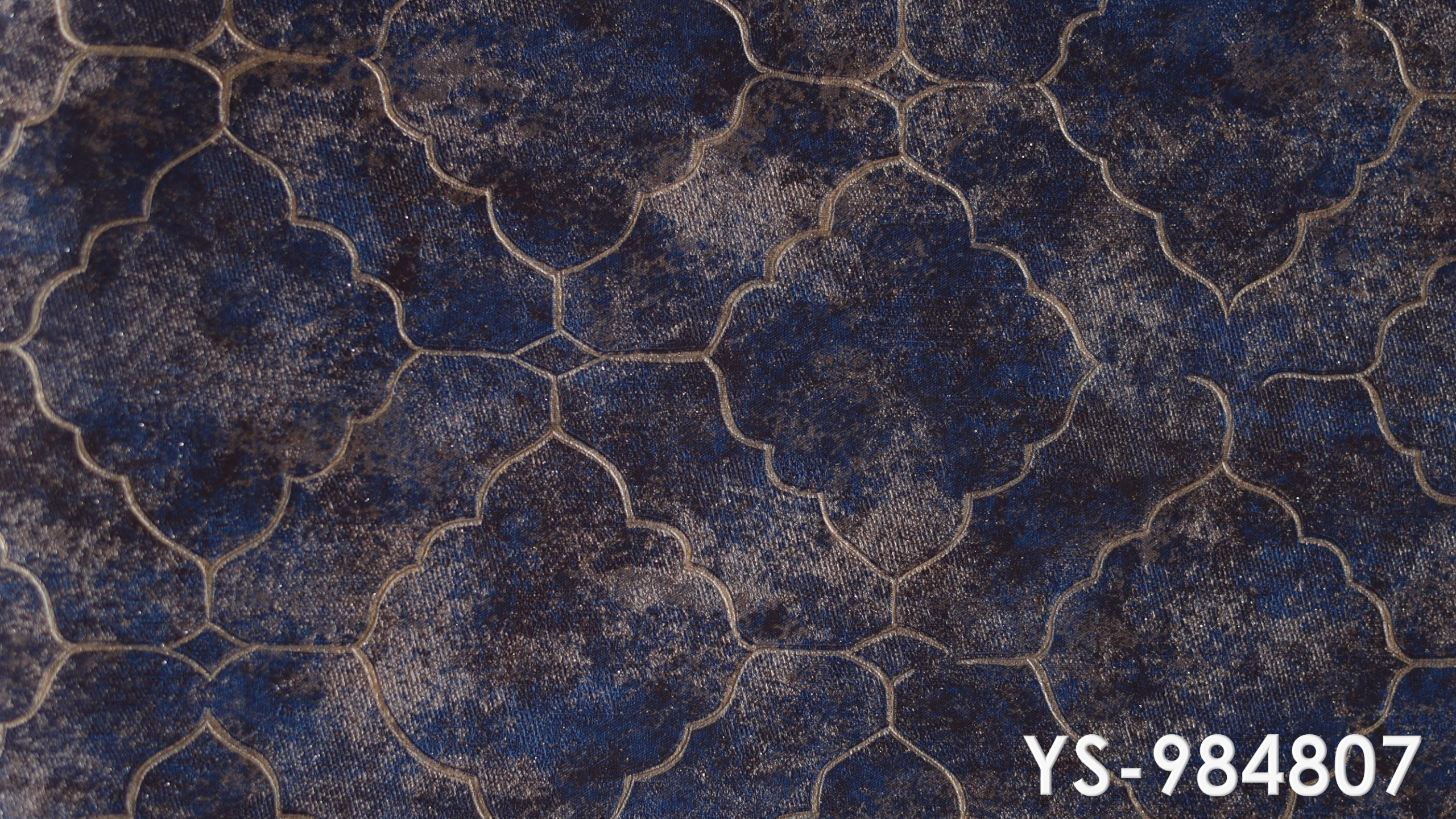
YS-971207B



YS-971204B

YS-971401B

YS-972708B



YS-984807

YS-971011B



YS-973402B



YS-972904B

YS-972804B

The image shows a close-up of a dark-colored fabric, likely black or very dark navy blue. The fabric features a repeating pattern of thin, light-colored (possibly beige or light grey) lines that form a series of interlocking chevrons or zig-zags. The pattern is consistent and covers the entire visible area. In the bottom right corner, the alphanumeric code 'YS-971409B' is printed in a white, sans-serif font.

YS-971409B

YS-973004B

- OJO: ALGUNOS MODELOS Y COLORES PUEDEN VARIAR AL ORIGINAL.